

Village Voice

VOL. 18
ISSUE 2

MONTHLY NEWSLETTER

www.EHLMemoryVillage.com

February is the month of Valentine's Day, and what better month to show the world how much we love our residents!



"I feel so lucky to be part of this beautiful community and have the chance to witness the loving interactions between our caring staff and our sweet residents. Being in a loving community like EHL is to be reminded of that lovely magic inside each of us."

- Chelsey, Admin Assistant

"I love when the residents tell me stories about their life and when they smile brightly at me. They bring so much joy into my life."

- Cera, Lead Direct Care Staff

"I love my residents for their smiles and laughs. Their unconditional love makes me want to come to work every day."

- Trea, Shift Supervisor

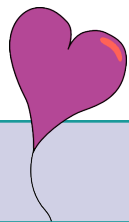
"I love that every time I come into a home, it's a new day from the resident's perspective. They just see me with fresh eyes each time."

- Christine, Health Services Coordinator, RN

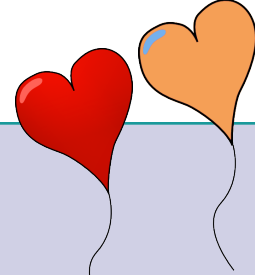
"I love our residents because you never know what you're going to get. Each day is something new - an adventure story, a memory of the glory days, or a hug you didn't know you needed that day." - Annie, Communications Coordinator

"I love being silly with them because they will be silly right back. I love listening to them talk about their life and learning from them."

- Brittany, Recreation Coordinator



WELCOME



to our Village!!

Patsy Minter



Patsy was a kindergarten teacher until her children were born, at which time she became a stay-at-home mom. During her retirement years, she enjoyed volunteering to teach children to read.



ElderHealth & Living's Support Group

A small group of caring people, sharing a similar journey.

We are so grateful you and your loved ones are part of our community and family here at EHL. We know transition is not easy. Many of you were cast into the role of caretaker and were well tuned in with your loved one's needs and desires long before we were. Our support groups are an excellent opportunity to voice your needs, triumphs, struggles, and questions. All we ask is that you come as you are. All the sessions are free to attend.

Please feel free to call the main office at 541-747-4858 if you have any questions about our support groups.

Support Group Schedule:

1st Monday of every month

5:00 - 6:00 pm

Feb. 7th & Mar. 7th

3rd Tuesday of every month

12:30 - 1:30 pm

Feb. 15th & Mar. 15th



Location:

The Club at ElderHealth & Living
382-B S. 58th Street
Springfield, OR 97478

Do you know someone looking for a caregiving job?

Interested peeps can apply online or call us!



www.EHLMemoryVillage.com 541-747-4858

No experience required - just a warm and giving ❤️ !

In Remembrance



Genevieve Allen



Saundra Miles

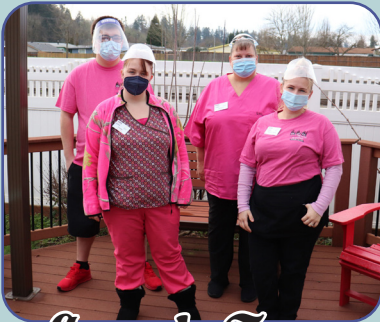


Martha Wheatley

*Wherever a beautiful soul has been,
there is a trail of beautiful memories.*

Spirit Dress Up Days

Some of our departments had fun dressing up in the same color last month! Coming up in February, we are going to celebrate Valentine's Day on February 14th by wearing pink and red.



Cascade Team



Health Center Team



Admin Team

Marianne's Memo:

Be happy and...

Smile!



**Happy
Valentine's
Day!**



Find us on:
facebook®

