

KISS
ME

COMMUNITY

TRUE
LOVE

XOXO

MATTERS

BE
MINEVOL. 13
ISSUE 2

MONTHLY NEWSLETTER

www.elderhealthandliving.com

Harvest of the Month

Our healthy menus are based on what is available locally - from fruits and vegetables to beef, beans, and grains! Each month we will feature the **Harvest of the Month**, which is one item that is grown or processed in Oregon that we serve on our menus. **Stay tuned each month to find out what is fresh out of the fields!!**



The Harvest of the Month for **February** is organic black beans from Al's Farm in Elmira, OR, purchased through Hummingbird Wholesale.

Support Groups

Memory Loss Solutions®
EHL Campus Support Group

Monday, **February 6th**

5:00 - 6:00 pm
@ Main Campus

Tuesday, **February 21st**

12:30 - 1:30 pm
@ Main Campus

Alzheimer's Support Group
Thursday, **February 2nd & 16th**

1:30 - 3:30 pm
@ Good Samaritan Society
3500 Hilyard Street, Eugene

Purple Cup Award

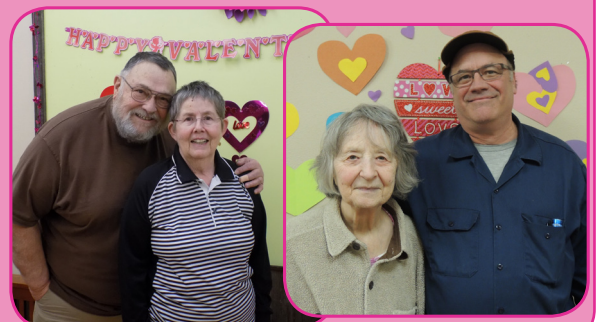
We are so excited and proud to be the winners of the **Purple Cup Award** from the Alzheimer's Association for being the Residential Care Community that raised the most money for the local Walk to End Alzheimer's this last October. As well as being in first place among Residential Care Communities, we were happy to find out that we were in second place overall for all teams in Lane County. Our goal in 2017 is to be in top place for both! **Look for information in September on how you can be a part of the EHL team for 2017!**



Community Coordinator Bridget with our Purple Cup Award!

Sweetheart Party

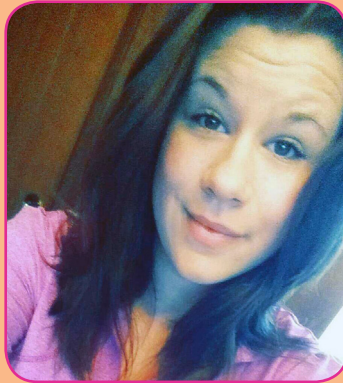
Please join us for our 11th Annual Sweetheart Party on **Thursday, February 16th** from **5:30 to 7:00 pm** in all of our homes. This is a party where residents, families, and staff come together to enjoy one another's company and delicious desserts and drinks. This fun event includes music and an optional sweetheart photo with your loved one. See below for some of last year's photos! Please RSVP with our front desk at **541-747-4858**. **We hope to see you there!**



EMPLOYEE SPOTLIGHT

Brittnie @ Mt. Hood Home

We are pleased to announce that Brittnie is our February 2017 Employee of the Month!



Brittnie was born and raised in Eugene, Oregon. She has lived in this area her whole life - growing up in the South Hills neighborhood. She reports that she is "a big family person. I love and cherish my family and wouldn't trade them for the world!" She has a younger brother she adores and two furry babies (dogs) named Bear and Sahara. She also reports she and her boyfriend of three years just got a house together!

Brittnie has been a part of the EHL community since February 2016. She works as Direct Care Staff in the Mt. Hood Home. When asked why she likes working at EHL, Brittnie replied, "I love the environment. I've worked in nursing homes, but I like the "home-like" feeling we have here at EHL."

Brittnie's Words of Wisdom: "Today is a present, tomorrow is a gift!"

Thank you, Brittnie, for your hard work, your dedication, and for being a part of our EHL team!

In Remembrance

Helen Zabriskie

Helen came to EHL in April of 2002. Amber, Resident Coordinator in our Aspen Home, shared that, "Helen was a kind soul who always kept a positive attitude. She was known for her love of chocolate milk and warm jammies. She will be missed by all of us." Helen passed away at the age of 86.

Calvin Monk

Calvin came to EHL in May of 2016. Jenn, Resident Coordinator in our Birch Home, commented that, "Calvin had a great sense of humor and loved to smile - it was contagious. He was always trying to help fix things in the home." Calvin passed away at the age of 86. He will be greatly missed.

Joan Stanley

Joan came to EHL in June of 2014. Barb, Resident Coordinator in our Cascade Home, shared that, "Joan was known as Sunshine because of her great smile and she would sing "You are my Sunshine" with you. She will be missed very much." Joan passed away at the age of 83.



Fundraiser Art Sale!

Help us reach our goal to be the top fundraising team in Lane County for the 2017 Walk to End Alzheimer's!

We are going to hold an art sale to raise money for the 2017 Walk to End Alzheimer's event. Please stop by The Club the morning of **February 23rd, from 8:30 - 10:30 am**, to participate. All of the art is from the recent remodel of our memory care homes and all pieces will be \$5-\$10 a piece.

All proceeds will go to the Walk to End Alzheimer's and the Alzheimer's Association.

EHL Activity Corner

Friday, Feb. 3rd @ 1:45 hosted by Willow Home
Cooking Club!

Tuesday, Feb. 7th @ 1:45 hosted by Aspen Home
Valentine's Day Craft!

Tuesday, Feb. 14th @ 2:00 hosted by Mt. Hood Home
Valentine's Day Party!

Thursday, Feb. 23rd @ 1:45 hosted by Birch Home
EHL Sing-a-Long!



ELDERHEALTH
& LIVING

Memory Loss Solutions*



Find us on:
facebook.