



COMMUNITY MATTERS



VOL. 12
ISSUE 8

MONTHLY NEWSLETTER

www.elderhealthandliving.com



Campus News

If you are concerned about traffic around the EHL campus, we encourage you to contact the City of Springfield and request that elder crossing signs be put up on the street. These signs would encourage traffic to slow down for our residents, families, and staff. Your requests, along with ours that have already been submitted, may lead to much needed changes. Here is the contact information:

City of Springfield Transportation, Traffic Safety & Control
Email: dpw@springfield-or.gov Phone: 541-726-3761

Support Groups

Memory Loss Solutions®
EHL Campus Support Group

Monday, August 1st

5:00 - 6:00 pm
@ Main Campus

Tuesday, August 16th

12:30 - 1:30 pm
@ Main Campus

Alzheimer's Support Group
Thursday, August 4th & 18th

1:30 - 3:30 pm
@ Good Samaritan Society
3500 Hilyard Street, Eugene

Music in the Meadow

Thank you to everyone who was able to attend Music in the Meadow, our first event in our new park! We had such a wonderful evening of beautiful music, good food, and great company. It was fabulous to see so many family members and residents together and a wonderful opportunity for us all to come together as a community. Special thanks to **Mucho Gusto** for the great food and **The Springfield Community Concert Band** for the wonderful music and entertainment! And a big thank you to all our EHL staff that stayed late and helped!!

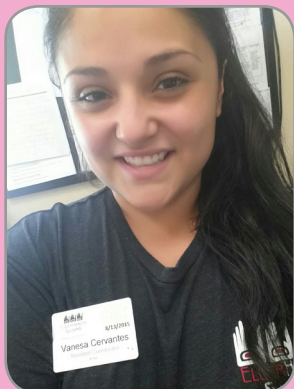


We look forward to seeing you all again next year!

EMPLOYEE SPOTLIGHT

Vanesa @ Mt. Vernon Home

We are pleased to announce that Vanesa is our August 2016 Employee of the Month!



Vanesa was born in Mexico and grew up both in California and Oregon. When asked about her family, she stated "I have two wonderful kids that are my whole life and an amazing husband. I couldn't ask for more!" She loves spending time with her family and states that the coast is her favorite place to visit.

Vanesa has been a part of the EHL community since August 2015. She works as the Resident Coordinator of the Mt. Vernon Home. When asked why she likes working at EHL, Vanesa replied, "I love everything I do. The residents have an important place in my heart."

Words of Wisdom: "You'll never be brave if you don't get hurt, you'll never learn if you don't make mistakes, and you'll never be successful if you don't encounter failure."

Thank you, Vanesa, for your hard work, your dedication, and for being a part of our EHL team!

HAPPY anniversary

On June 30th, we were honored and touched that Jim Ellison, and his wife Julie Aspinwal-Lamberts, held a wedding vow renewal ceremony at the Diamond Peak Home, where Jim resides.



In Remembrance

Margaret Swanson

Margaret came to EHL in June of 2013. Jenn, Resident Coordinator in our Birch Home, commented that "Margaret was always smiling and loved compliments, she loved to laugh with staff and help other residents with blankets and clothing. We will miss her smile first thing in the morning." Margaret passed away at the age of 81. She will be missed deeply.

Joan Acker

Joan came to EHL in September of 2014. Vanesa, Resident Coordinator in our Mt. Vernon Home, commented that "Joan was an inspiration to all of us. She always talked about her studies and wanted to do more. She was an incredible woman full of advice and admiration." Joan passed away at the age of 92. She will never be forgotten and will always be missed.

From Joan's family: "Joan was a remarkable woman and even though her last years are not what she would have signed up for, she never appeared unhappy or angry. She died quietly without fuss in a place where she was comfortable and cared for."

Congratulations Jim and Julie on 35 years of marriage!



EHL Activity Corner

Wednesday, August 3rd @ 1:45 hosted by **Mt. Vernon Home**
LadyBug Art

Friday, August 5th @ 1:45 hosted by **Diamond Peak Home**
Minute to Win It!

Tuesday, August 23rd @ 1:45 hosted at **Cascade Peak**
Puffer Fish Art

Wednesday, August 31st @ 1:45 hosted by **Mt. Hood Home**
Ring Toss



ELDERHEALTH
& LIVING

Memory Loss Solutions*



Find us on:
facebook